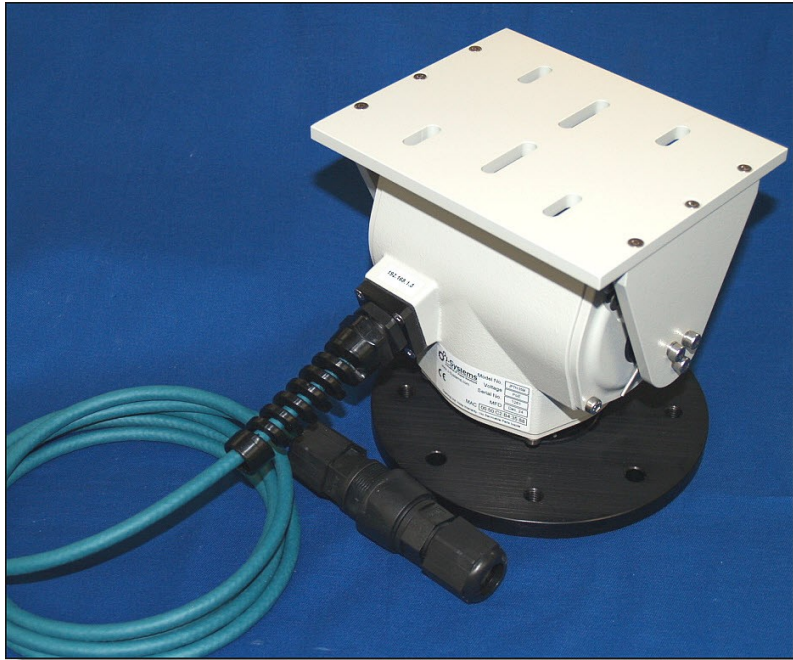


General Catalog 2025



PTZFusion Lite-13



What's Inside

About J-Systems
Pan-Tilt Positioners
Mounting Brackets
Carbon Fiber Tripods
Integrated Solutions
Engineered Solutions
Photo Gallery
Customer Listing

1-630-627-3458

Customer Focused and Quality Driven

J-Systems, Inc. is a family owned and operated business that will soon celebrate its' 26th successful year. Our success is directly attributable to the dedication and commitment we provide our customers. One of the most important things we can do as an organization is to listen. When customers need support, have feedback to offer or merely want to discuss an opportunity, listening and responding is vital.

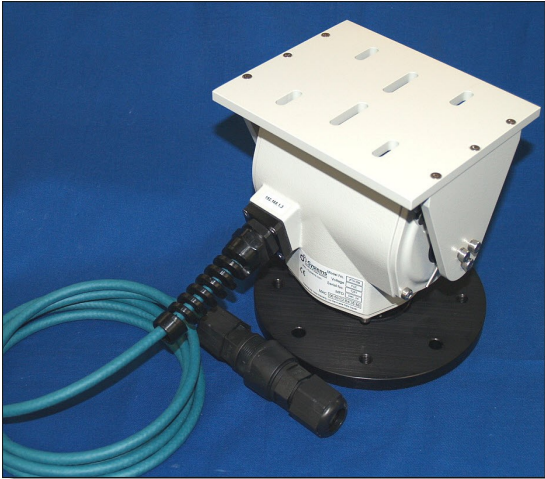


After several decades of designing and manufacturing a wide array of both commercial and harsh duty solutions for remote video monitoring, we have developed a vast archive of knowledge. Based upon this experience, we have the ability to recommend and build solutions with the assurance that they will deliver and perform as expected. This ability sets us apart from our competitors and eliminates the need for customers to do research, try things on their own, or worst case find out the hard way that something doesn't work as expected.

The two principals involved with the daily operation of the business provide a wealth of engineering, networking and international business experience. This affords our customers in depth knowledge which can be applied to key areas including selecting cameras, PTZ control systems, remote power solutions such as solar, remote control options, power zoom lenses, wireless communications and design constraints that assure remote, harsh environment equipment survival.

Give us a call to experience the difference: 1-630-627-3458

PTZFusion Lite-13



ONVIF Conformant PoE+ Powered Pan-Tilt Positioner

New

**US Designed, Manufactured and Supported
ONVIF Conformant Pan-Tilt Positioner**

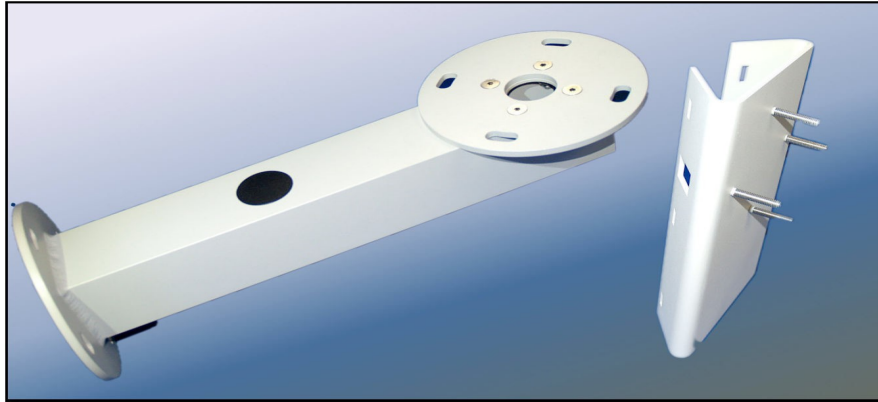
Simply add an ONVIF conformant, fixed IP camera to the PTZFusion Lite-13 and create a fully ONVIF conformant Pan-Tilt camera system that is PoE+ powered (25.5W).

The PTZFusion Lite-13 platform is completely transparent to VMS software. The only device visible and discoverable will be the camera which now features native pan and tilt capabilities through the VMS software

FEATURES

- Rugged Aluminum & Stainless Steel Construction
- IP 68 Rated
- Advanced Micro-Controller w/ Built-in Web Interface
- Advanced Web Interface and Rest API
- -30C to +60C Operation Rugged All-Weather Design
- IEEE 802.3at Compliant Supports RS485 Pelco D (Option)
- Works with ONVIF Conformant VMS Systems
- Designed, Built, and Supported in the USA

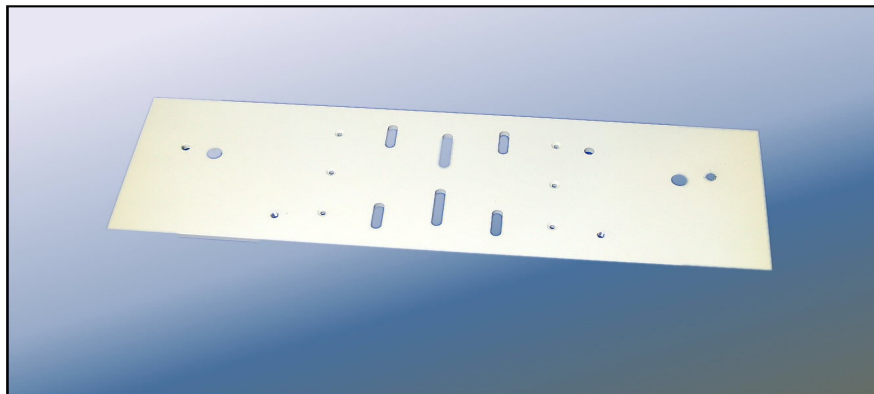
Standard Mounting Brackets



Standard mounting brackets include wall mount arms and pole mount adapters to hold our pan & tilt positioners using a larger 6 inch diameter mounting base ring (option).

These are powder coated Aluminum. The pole mount adapter is designed for poles that are at least 3.25 inches in diameter.

Custom



Shown below is an optional 15.75 inch wide top plate for the PTZFusion Lite-13. This allows LED spotlights or IR illuminators to be mounted under the plate.

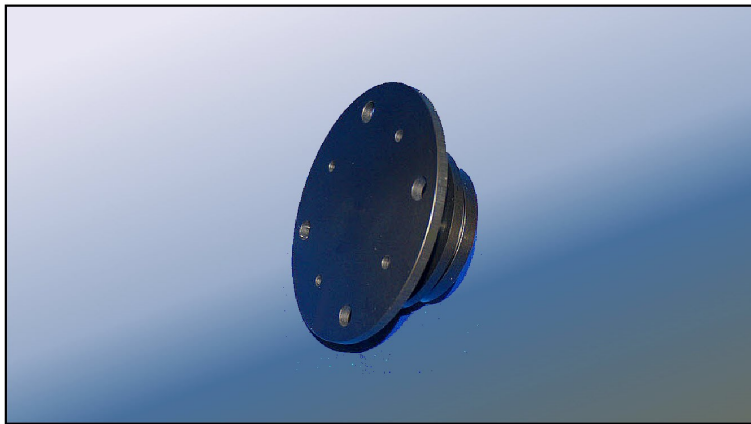
Over the years, numerous custom mounts and brackets have been designed and manufactured to meet customer requirements.

Carbon Fiber Tripods



Highly portable, light weight carbon fiber tripods are available in maximum heights of 5.6 ft, 7.3 ft, and 9.2 ft (as shown above).

These units are designed to carry Pan-Tilt Positioners like the PTZFusion Lite-13 along with an IP camera.



The above CNC machined Aluminum Tripod Adapter is required to hold the PTZFusion Lite-13. It also provides guy rope tie-down points for windy or rough terrain field applications.

Customer Focused and Quality Driven

J-Systems, Inc's heritage revolves around the creation of customer-driven integrated solutions. That is the very core of what J-Systems does to help customers achieve a desired goal.

From then until now, J-Systems continues to help customers turn their application need into products that meet those needs.

Shown to the right is an integrated solution developed years ago for the FBI (DOJ) as an ad-hoc, rapid deployment, long range video surveillance system that can be deployed quickly in all types of weather.



Many times, a simple integration involves adding a camera and a protective camera enclosure to create a fully functional PTZ camera system.

Integrations can include add-ins such as LED spotlights, spotting lasers, IP intercoms, WiFi, cellular communications, IP relay control functions to name just a few.

Please give our team a call to discuss your application needs; we are always happy to assist.

Cost Effective System Design-Build Services

Starting with the first customer interaction, we begin to build a basic specification detailing system requirements. From that point, the project begins to take shape and is segmented into Product Design, Prototyping Testing, and Documentation.

Our design focus is to create various types of rugged, industrial grade, sensor / control based systems. At this point, a design concept is created as well as preliminary cost estimates.

Systems can run on AC or DC power, operate wirelessly or cabled, record images locally or remotely, provide remote IP control of all system functions including vision in the dark. A great deal of design effort is expended to achieve the right balance of custom designed hardware / software vs using off-the-shelf industrial grade components. .

Our capabilities include the following skill sets:

- * ***Electronics Design***
- * ***Embedded Firmware Development***
- * ***Web Interface Development***
- * ***Mechanical Design***
- * ***Prototype***
- * ***Production Services***

With over 25 years of experience in designing custom systems, it is highly possible that we have already designed a system close to your needs. We never charge to discuss your project on the telephone, so we encourage you to call and discuss your project with one of our team members.

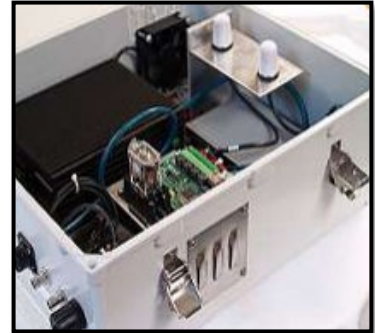


Battery Powered First Responder
Command Center

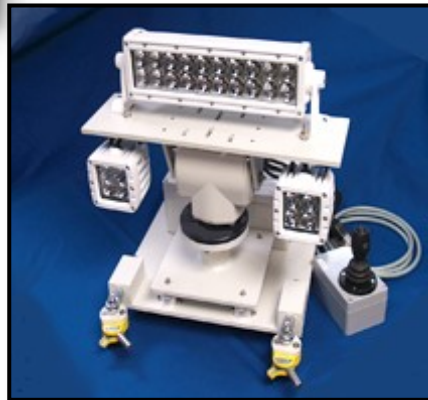
Give us a call to experience the difference: 1-630-627-3458



Pan-Tilt Spotlight & Camera System for Port of Olympia



Covert Cellular Edge Video Recording System for FBI



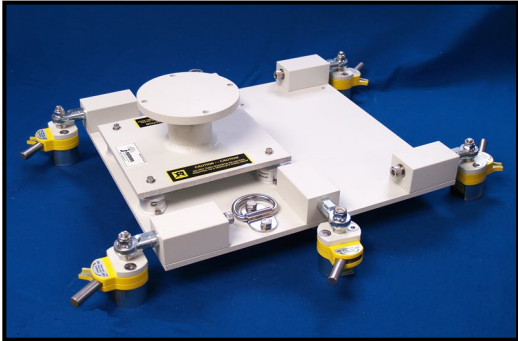
Vehicle Mounted Pan-Tilt Search & Rescue LED Light System



Long Range PTZ Video Surveillance System



Cellular Construction Camera for Illinois Tollway Project



**Mobile Mount Platform
Designed for the USDA**



**Thermal Pan & Tilt
Camera with LED
Spotlights for USDA**



**Canadian Rockies PTZ Camera
for Weather and Avalanche
Warning Systems**



**Solar Powered Video
Surveillance with Motion
Detection and Cellular
Backhaul**



**Wireless Communications
System for Large California
Ranch Property**

**The following is a partial listing of customers
we have worked with over the past 26 years.**

| | |
|-----------------------------------|------------------------------------|
| A Teknik - Demark | Nevada DOE - Natl Security Tech |
| Ametek | Northrup Grumman |
| Bombardier | Pacific Gas and Electric |
| Campbell Scientific - Canada | Parsons |
| Clean Connect | Port of Olympia |
| Duos Technology | Raytheon |
| Extreme Consulting - Finland | Reutech SA Radar Co - South Africa |
| FBI | Sandia National Labs |
| FLIR | Sikorsky Aircraft |
| Flour Idaho | Skycop |
| Frequentis USA, Inc. | Spotter Global |
| GA Innovations - Canada | Stanford University |
| General Dynamics | TecDev - Australia |
| Harris Corporation | Tonbo Imaging - India |
| Idaho Clean Up Project | Twin Eagle Consulting |
| Lawrence Livermore National Labs | US Army NASA Research Langley |
| Mobile Camera Systems - Australia | USDA |
| National Hockey League | Viper Imaging |
| National University - Australia | Wi-Tronix |